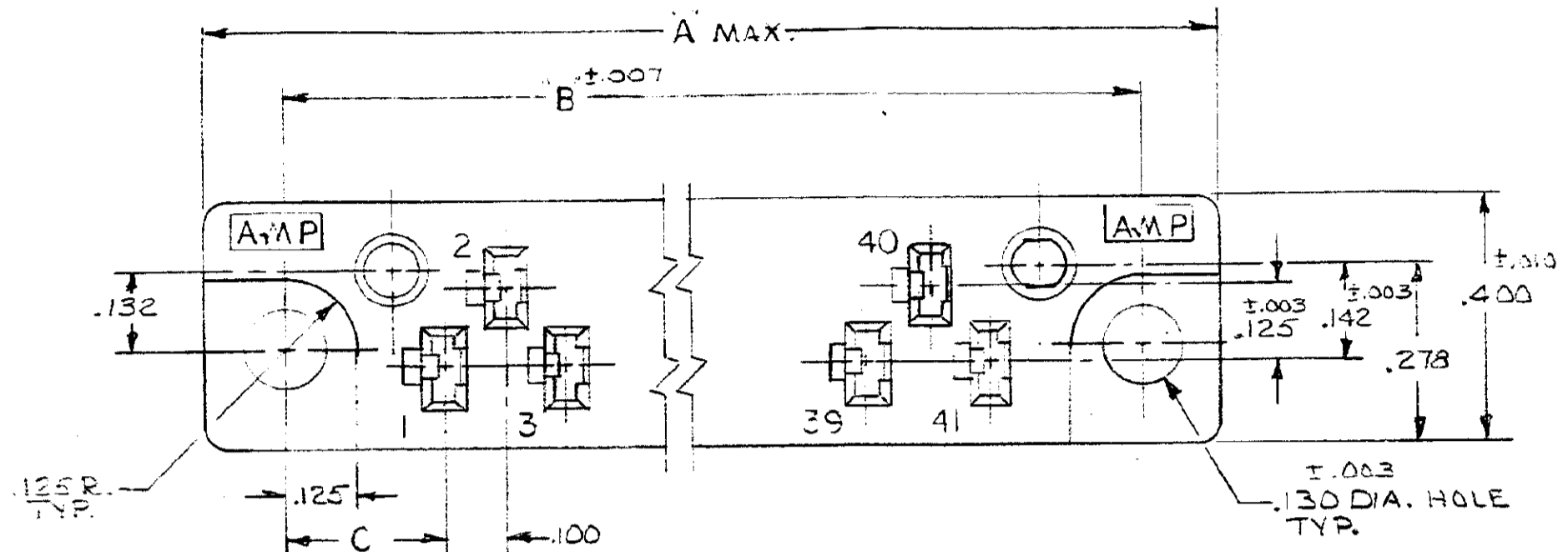


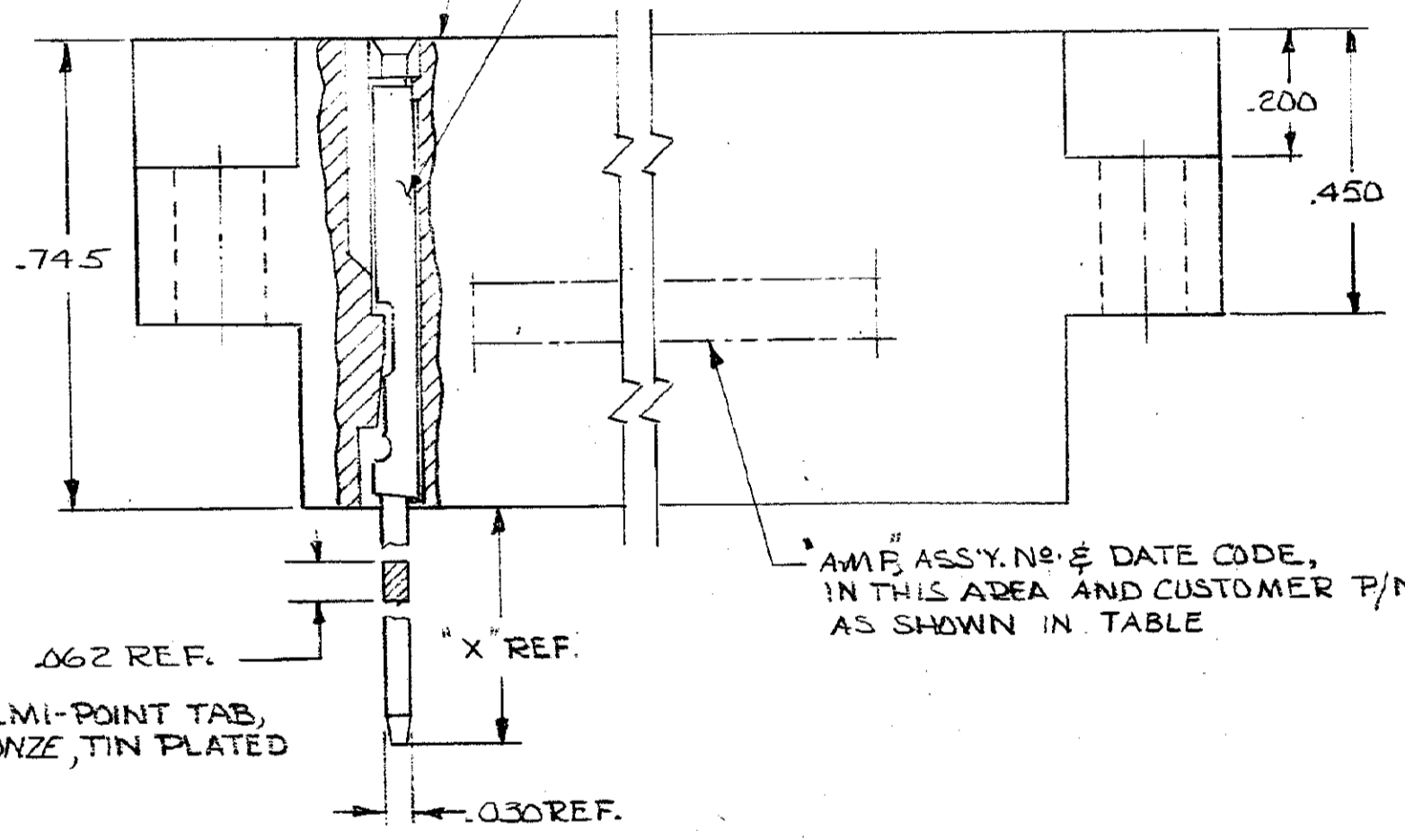
DRAWING MADE IN AMERICAN PROJECTION  
 1971 BY AMP INCORPORATED. ALL RIGHTS RESERVED. AMP PRODUCTS COVERED BY PATENTS AND/OR PATENTS PENDING.

REVISIONS				
ZONE	LTR	DESCRIPTION	DATE	APPROVED
	D	RELEASED		
	A	REV-ECN 811	Nov 9-10-85	DGS



HOUSING: DIALYL PHTHALATE (GLASS FILLED) COLOR: GREEN. PER. MIL-M-14, TYPE S.D.G.-F.

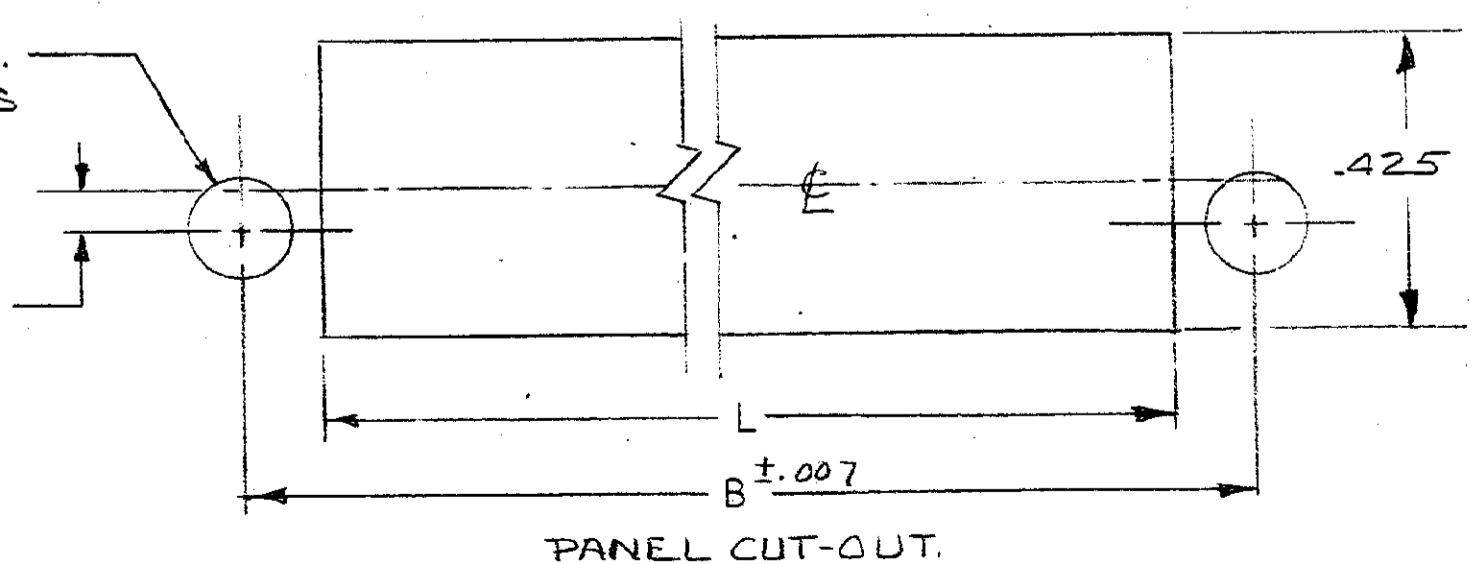
AMP BLADE RECEPTACLE PHOS. BRONZE GOLD OVER NICKEL.



TERMI-POINT TAB, PHOS BRONZE, TIN PLATED

.140 DIA. 2 PLACES

.054



583777-2	41	.600	4.790	4.530	.265	4.310	2	SM-A-586272-2
583777-1		.770					3	SM-A-586272-1
ASSY. NO.	NO. OF POSITION	X	A	B	C	L	NO. OF TERM-POINT CLIPS	CUSTOMER P/N

UNLESS OTHERWISE SPECIFIED DIMENSIONS ARE IN INCHES TOLERANCES ON: DECIMALS ±, ANGLES ±	CONTRACT NO.		AMP INCORPORATED HARRISBURG, PENNSYLVANIA	
	DR	12-17-71	NAME	
MATERIAL	CHK	J.S. Heide 12-20-71	AMP BLADE RECEPTACLE HOUSING FILLED WITH POST TYPE CONTACT.	
	APPD	D.D. Bushey 12/20/71	SIZE	
SEE CALL-OUT	REL	R. Shuman 12/11/71	CODE IDENT NO.	NUMBER
	DSGN APPD		C	00779
	OTHER APPD		SCALE	4-1
				583777
				SHEET

PRINT 37